

GENERAL INSTRUCTIONS AND CAUTIONS

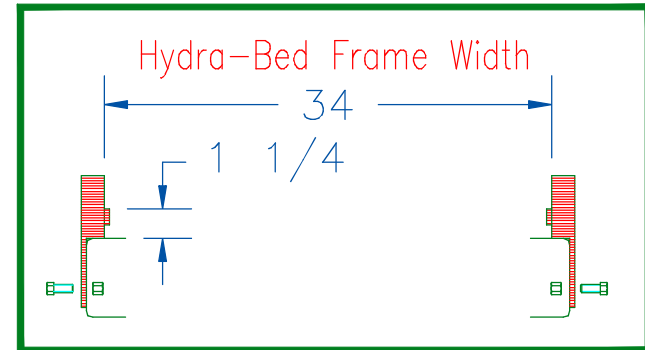
Note: When welding, attach welder ground only to Hydra-Bed, not to truck frame. Use low-hydrogen rod or wire electrode. NEVER weld to the frame of the truck. Correct installation of the Level-Lok system assures Front to Rear and Side to Side leveling as well as Left to Right centering of the Hydra-Bed. Never obstruct factory overload spring mounting locations.

When drilling truck frame, do not damage any part of the braking, fuel or electrical systems.

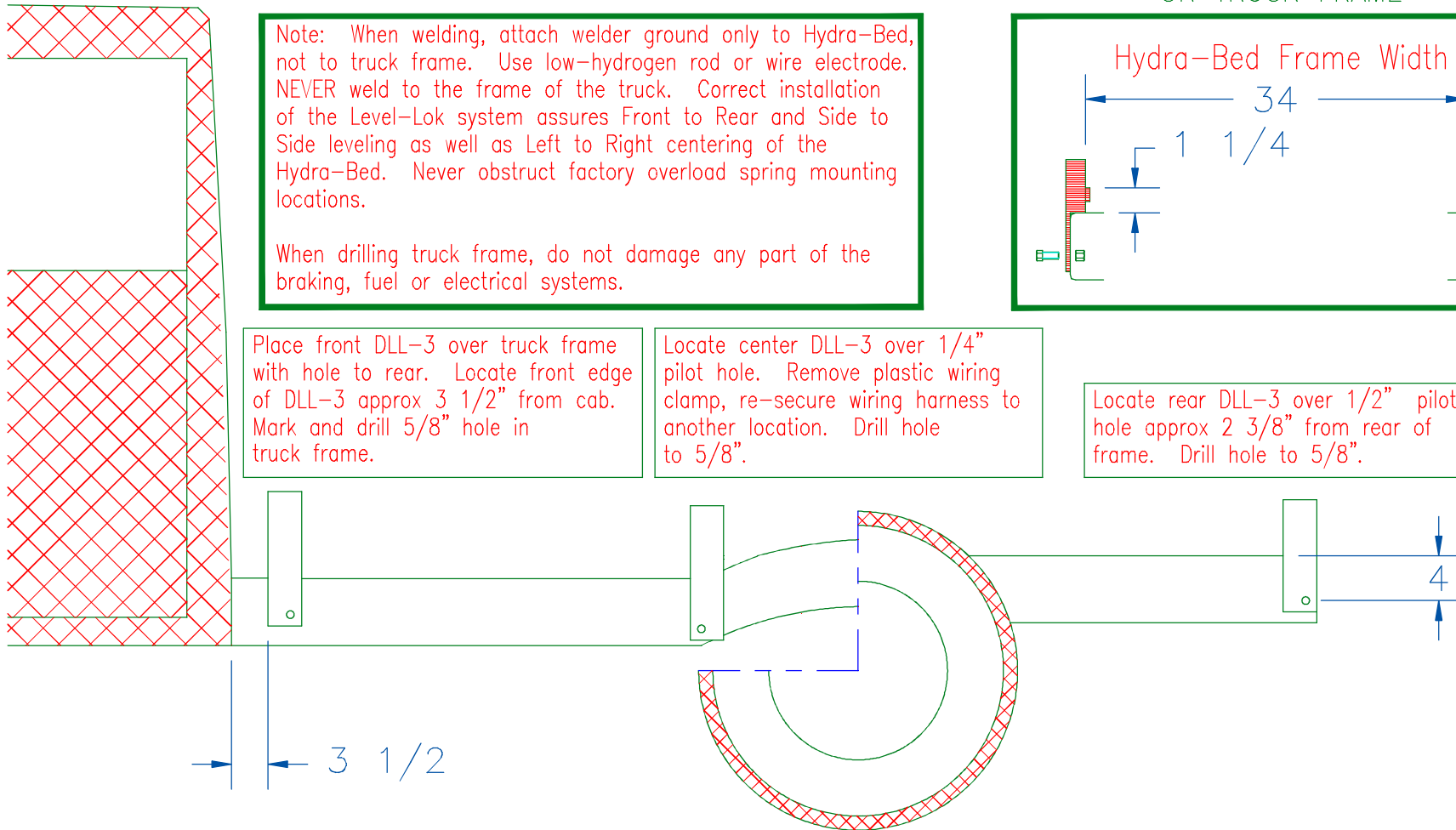
Place front DLL-3 over truck frame with hole to rear. Locate front edge of DLL-3 approx $3 \frac{1}{2}$ " from cab. Mark and drill $\frac{5}{8}$ " hole in truck frame.

Locate center DLL-3 over $\frac{1}{4}$ " pilot hole. Remove plastic wiring clamp, re-secure wiring harness to another location. Drill hole to $\frac{5}{8}$ ".

VIEW OF REAR LEVEL-LOKS ON TRUCK FRAME



Locate rear DLL-3 over $\frac{1}{2}$ " pilot hole approx $2 \frac{3}{8}$ " from rear of frame. Drill hole to $\frac{5}{8}$ ".



DLL-3 1994-2002 Dodge
60" & 84" Cab to Axle Dual Wheel

Kit contains 8 strap assemblies. Use 3 strap assemblies per side when mounting an HB 2X0.